



Hotplate

Meteor

Tofko hot plates are suitable for laying grounds and inking plates. They use an electronic timer rather than a thermostat to control the temperature. This means the temperature remains constant.

For presses
see pages 71-73

4300	60 x 60cm, square
4310	60cm diameter, circular



Dishes

Economy PVC dishes

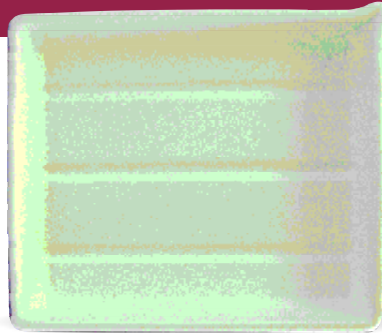
Suitable for diluted acids and ferric chloride.

1826	250 x 300mm	£24.00
1827	400 x 500mm	£55.00

Natural polythene dishes

Very robust, will stand full strength nitric acid. Dishes in other sizes can be made to order.

1822	250 x 300mm	£57.50
1823	300 x 450mm	£82.00

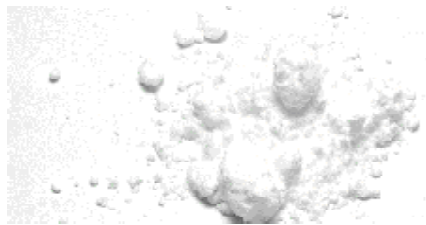


Printmaking Sundries



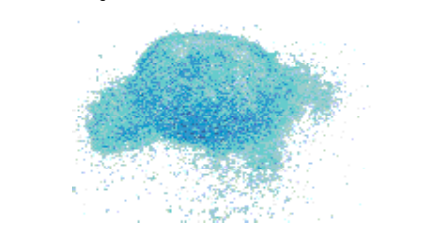
Ferric chloride crystals

17351	500gm	£11.50
17352	5kg	£96.00



Citric acid powder

1734	500gm	£5.25
17342	200gm	£3.70



Copper sulphate crystals

1768	500g	£5.75
------	------	--------------

Copper plate oil

For modifying the viscosity of inks and for mixing with pigments to make your own inks.

1700	Weak (1 poise) 500ml	£8.85
1701	Weak (1 poise) 5 litre	£58.00
1702	Medium (50 poise) 500ml	£8.85
1703	Medium (50 poise) 5 litre	£58.00
1704	Strong (200 poise) 500ml	£8.85
1705	Strong (200 poise) 5 litre	£58.00

Asphaltum powder

Used in making Etching grounds.

1762	500gm	£7.95
17622	5kg	£71.55

Beeswax, lumps

Can be used when making Etching grounds.

1765	500gm	£9.75
------	-------	--------------

Carborundum powder 500gm

Carborundum powder can be used to create rich areas of tone when making Colographs. The range starts with the coarsest at 60 grit and goes up to the finest at 220 grit.

173006	60 grit	£4.95
173012	120 grit	£4.95
173018	180 grit	£4.95
173022	220 grit	£4.95

Sugar lift solution

For use in Etching to create painterly marks.

1718	60ml	£4.60
------	------	--------------

Rhind's Etching Products

Liquid etching ground

Liquid etching ground can be poured or brushed onto the plate. Dries in minutes at room temperature.



1710	60ml	£3.95
1712	250ml	£9.75
1713	500ml	£15.50

Stopping out varnish (dark)

White spirit based, used to protect both the back of your plate and to stop-out areas where sufficient biting has taken place.



1740	60ml	£3.95
1742	250ml	£7.50
1743	500ml	£11.25
1745	5 litre	£67.00

Straw hat varnish (dark)

Methylated spirits based varnish.



1760	500ml	£11.95
1761	5 litre	£85.00

Re-biting varnish

A special varnish that can be rolled onto a partly etched plate once the original ground has been removed.

1750	15ml	£3.40
------	------	--------------



Etching balls

Etching balls are the traditional form of ground which can be applied directly to a heated plate and spread with a roller or dabber.

1720	Hard dark 15g	£3.35
1725	Hard dark 75g	£11.95
1721	Soft dark 15g	£3.35
1726	Soft dark 75g	£11.95
1722	Hard transparent 15g	£3.70
1723	Soft transparent 15g	£3.70